



THE VERMONT KNITTING RETREATS

With Beth Brown-Reinsel

Due to the popularity of our August retreats, we've added a weekend in March! Come join us for an extended weekend to knit, to laugh, to join in camaraderie of the very best kind!



I love teaching knitters in this beautiful setting. The small class enrollment makes these weekends a true retreat. We laugh a lot, knit a lot, and eat very well. It all adds up to a memorable time for new and returning participants! ~Beth



Who: YOU are invited to join us for a rich knitting experience!

What: A three-day retreat in southern Vermont on an historic apple farm.

Why: Get away from it all, learn traditional knitting techniques based on Beth's research from her travels in Scandinavia and beyond, be with other like-minded knitters who are welcoming of old and new friends!

Where: Classes are held in Dummerston, VT, (near Brattleboro, VT) in the Dutton Farmhouse, a reasonable drive from Boston, Albany, Hartford and NYC.

When: NEW ON THE SCHEDULE March 9-13, 2017.



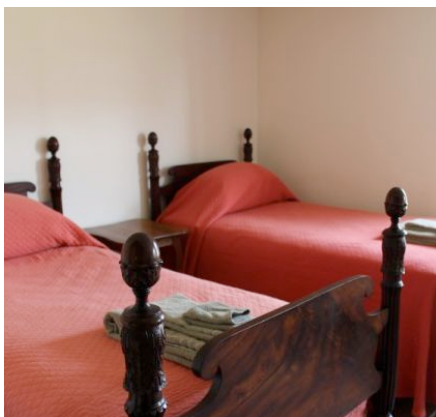
How much: \$525 includes all instruction and comprehensive handouts, Thursday welcome dinner, breakfast and lunch on Friday, Saturday, and Sunday. (Dinners on those days are on your own. Often the group will go out or bring dinner in.)

The Retreat schedule:

Thursday evening: Arrive around 5 pm, wine and hors d'oeuvres at 5:30, dinner at 6:15.

Friday, Saturday and Sunday: Breakfast: 8:30, class: 9:30 to 12:00, lunch 12:00 to 1:00, class 1:00 to 3:30.

Getting there: Amtrak and Greyhound both serve Brattleboro with one scheduled north and one south per day. Car rental is available in Brattleboro, as is taxi service (www.brattleborotaxi.com). Greyhound stops in Brattleboro, VT, just minutes from the class site. The closest airports are Hartford, CT (BDL), Manchester, NH (MHT) Albany, NY (ALB) and Boston, MA (BOS). If you drive, enter "Dutton Farmhouse 255 Dutton Farm Road, Dummerston, VT 05301" into Google Maps for directions.



Staying there:

We have four sleeping rooms at the Dutton Farmhouse, where the workshop is held. There are three bedrooms upstairs, one on the main floor, and shared bathrooms. Contact Marilyn for more information on staying there.



Additionally, the following hotels are within 5 minutes and 5 miles of the workshop.

- The Hampton Inn 802.254.5700 www.hamptoninn.hilton.com/Brattleboro
- Holiday Inn Express 802.257.2400 www.brattleboroexpress.com
- The Latchis 802.254.6300 www.latchis.com
(Locally owned and located in downtown Brattleboro, about 10 minutes away)
- Motel 6 802.254.6007 www.motel6.com/BrattleboroVT

And recommended by one of our attendees:

- Chesterfield Inn, Chesterfield, NH 603-256-3222 www.chesterfieldinn.com

Retreat Topic: The Fana Cardigan

Class Description:

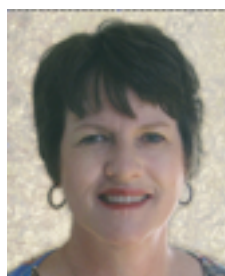
The classic details and traditional construction of the Norwegian Fana Cardigan sweaters will be taught in this three-day workshop through the knitting of a small sweater. Techniques to be learned include working with 2 yarns (in three different styles), yarn dominance, reading charts, circularly knitted body and sleeves, square and drop shoulder armholes, cut-and-sew armholes and front (two kinds of steeks), knitted self-facings, buttonbands, and 2-color star, band, and checkerboard patterns. Designing one's own Fana cardigan will be discussed.



A \$100 deposit will secure your spot in the workshop, with the balance due Dec 1.

Checks should be made payable to:
Beth Brown-Reinsel

and mailed to:
Marilyn King
Black Water Abbey Yarns
PO Box 470688
Aurora, CO 80047-0688



If you have any questions,
or for more information:
Contact Marilyn-
marilyn@abbeyyarns.com